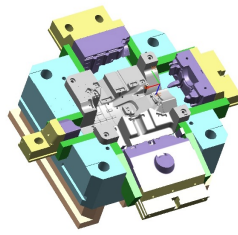
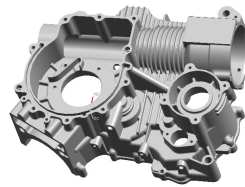




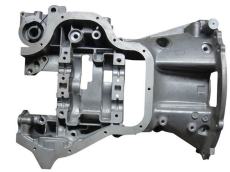
Since 1996



MOULDS



CASTING & CNC



AUTO PARTS

www.faustoind.com



About us

Ningbo Fausto Industry Limited (Former Ningbo Jintao Mould Die Casting Machinery Co.,Ltd.) is a professional manufactory in designing and manufacturing casting moulds and die casting product such as aluminum die casting,zinc die casting,and other alloy die casting product.



- Our Company located at the east of Ningbo City,Zhejiang,China PRC, near Beilun Horbar Port,covers the area of 12000 M² , and the building area is 9000 M² .

- We design and manufacture full set of casting moulds with advanced technology such as CAD and CAM. Our Equipments includes more then 30 major lastest technology CNC Machining centers, CNC lathes and other machine tools. Also includes 7 die casting machines ranges from 180T to 1000T. Our annual manufacture capacity is 3000T.

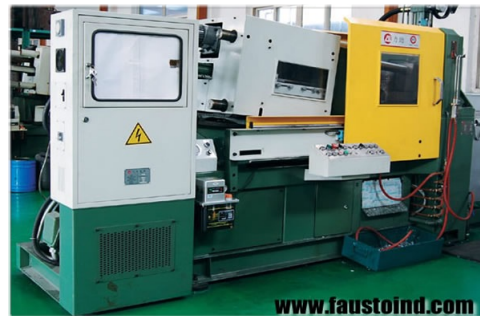
- Our main product includes following
 - Die casting parts for LED and lighting industry.
 - Die casting oil pans for auto parts.
 - Die casting car throttle body.
 - Die casting car mirror brackets.
 - Die casting car transmission gear box housing.
 - Die casting parts for other industry appliances beside automobile industry.
- ISO9001 QMS: We strictly manage our factory under ISO 9001 quality managements system. In order to assure the stability of the products and satisfy our customers all around the world.

Since 1996



Four factories with advanced equipments offer you In-house design,molding,Casting, CNC, machinery processing, Inspections, packing, shipping, full chains services for your parts needs.

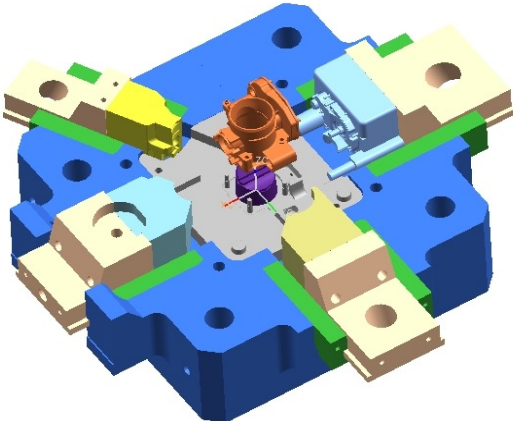
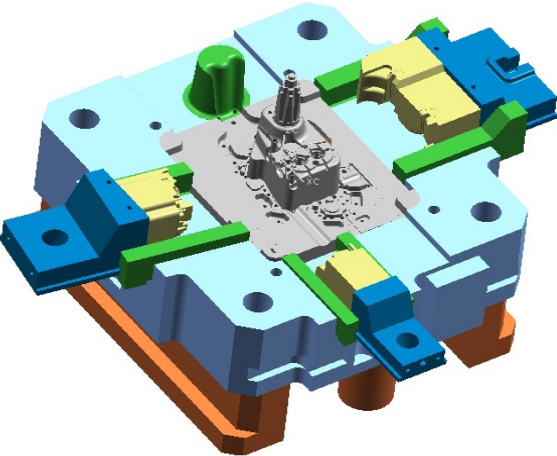
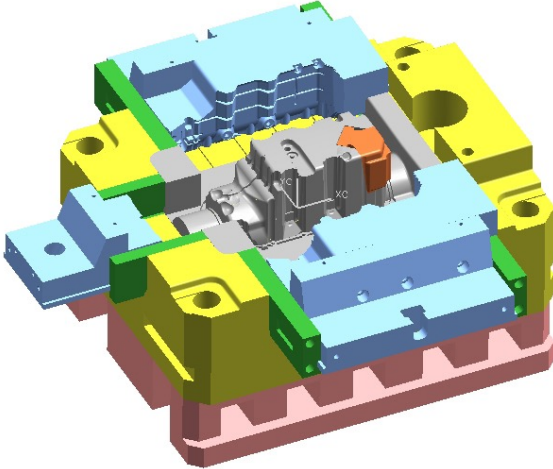
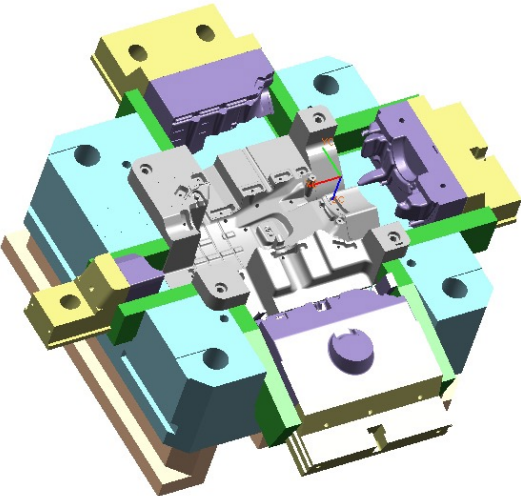
Machines and facilities



ISO 9001 QMS CERTIFICATION

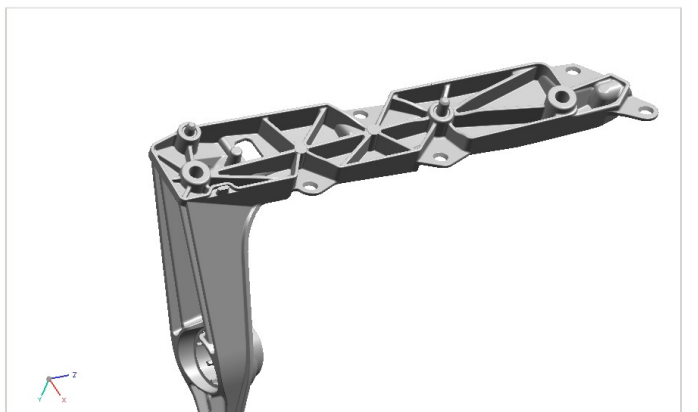
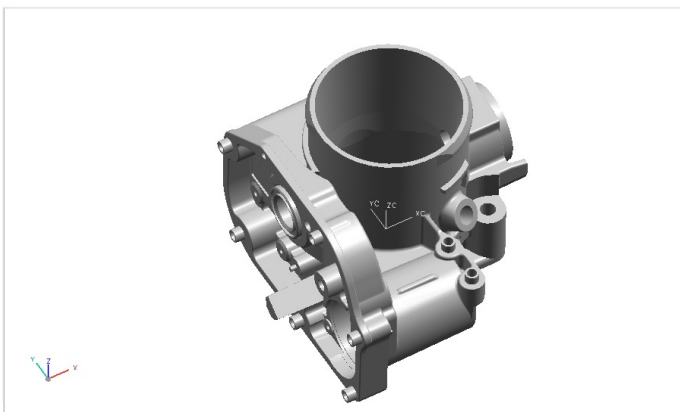
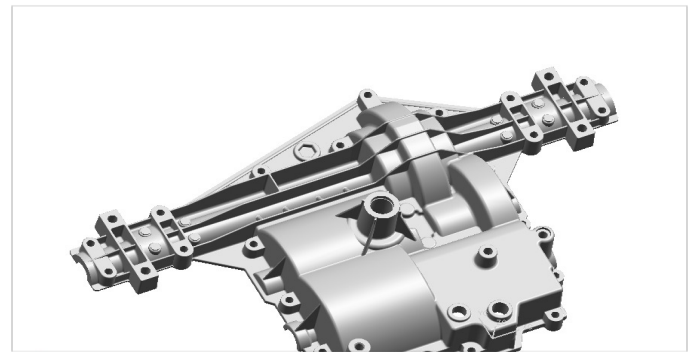
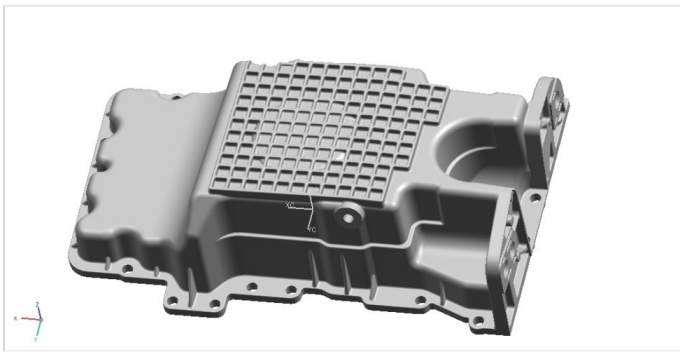


Die casting Mould design and tooling

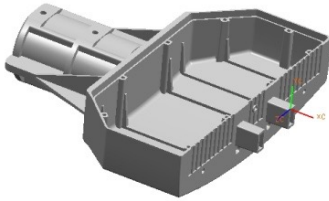
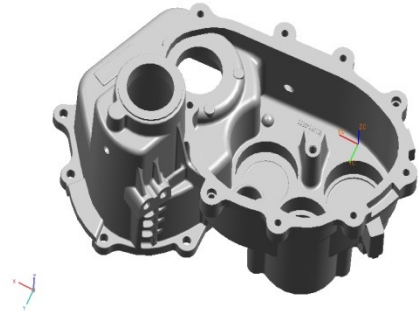
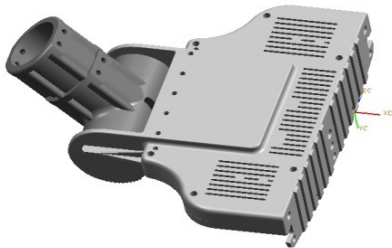
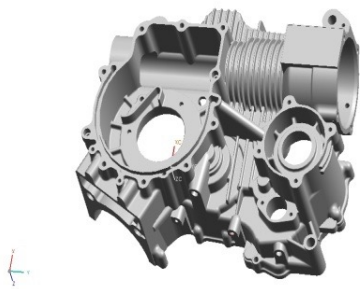


Main product OEM/ODM

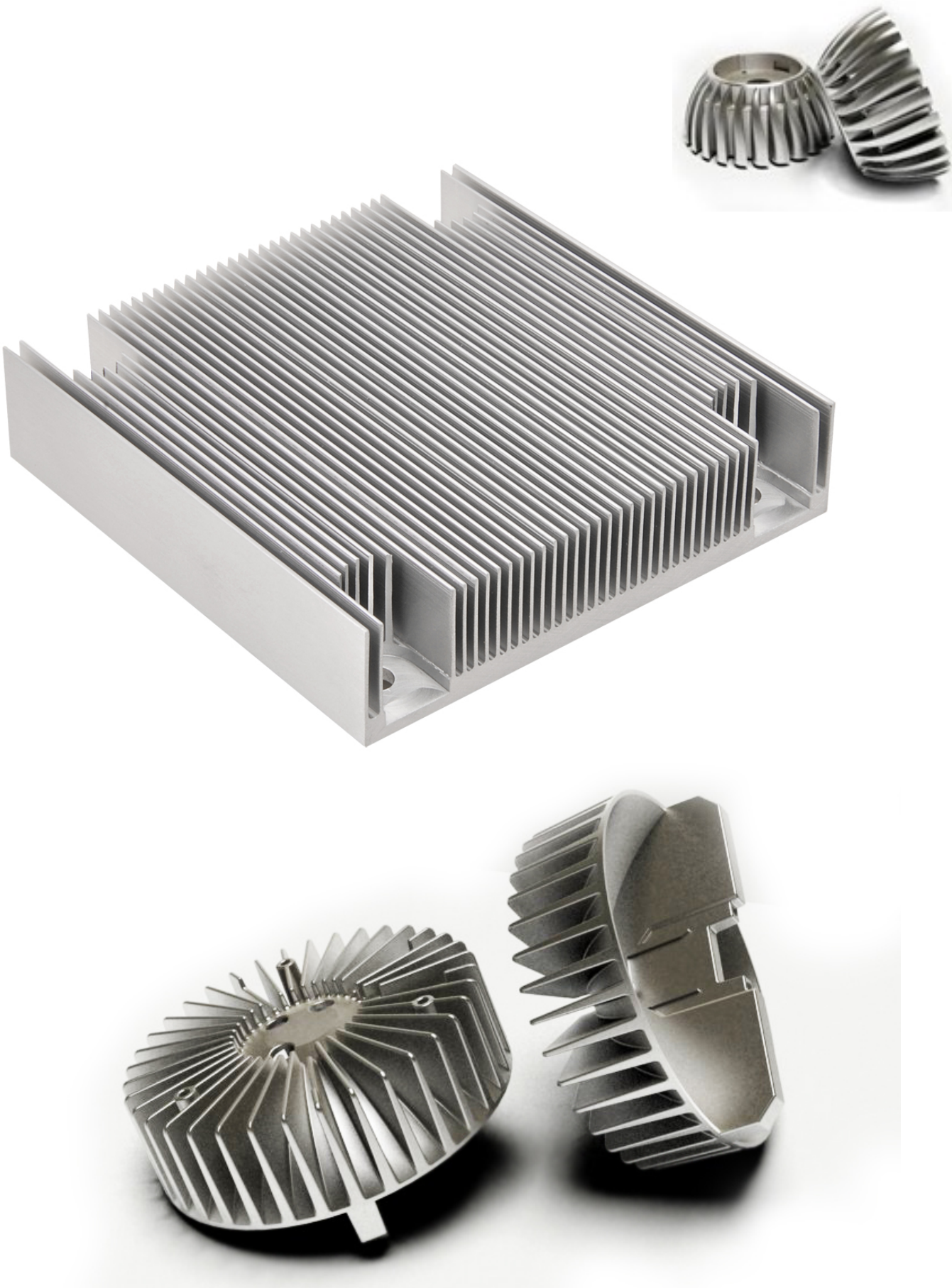
- Other die casting parts for auto car Industry.



Die casting parts for other Industry



Heatsink and other cooling parts.



FAQs

- 1, Q: Manufacture Capacity for Aluminum products ?
A: 4000 Tons / Year.
- 2, Q: Lead Time ?
A: Mould tooling time, 30-40 days.
Die casting parts production time, 15-25 days.
- 3, Q: Min order ?
A: 1 Set for mould, 1 tons for die casting parts each model.
- 4, Q: Mould life time?
A: a, If you buying mould only, 100000 times moulding or 300000 times moulding according customers' requirements.
b, If produce die casting parts at our factory, Fasuto will charges for the continue needs mould after mould out of life time.
- 5, Q: FOB PORT?
A: NINGBO PORT - CHINA.
- 6, Q: INTERCONS ?
A: EXW,FOB NINGBO, CFR YOUR PORT, CIF YOUR PORT.

